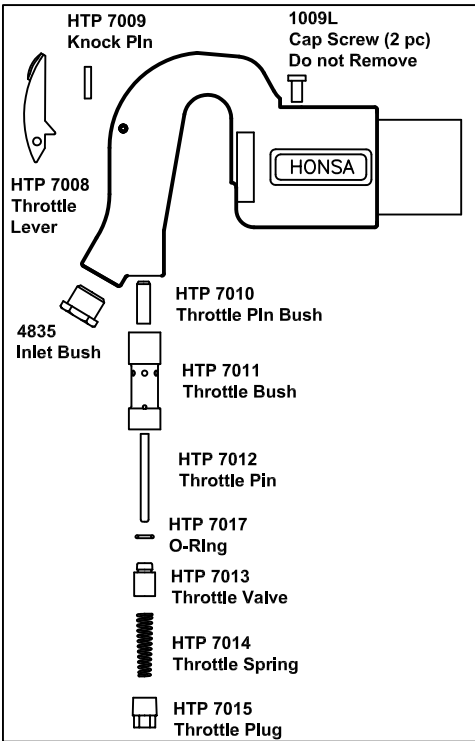
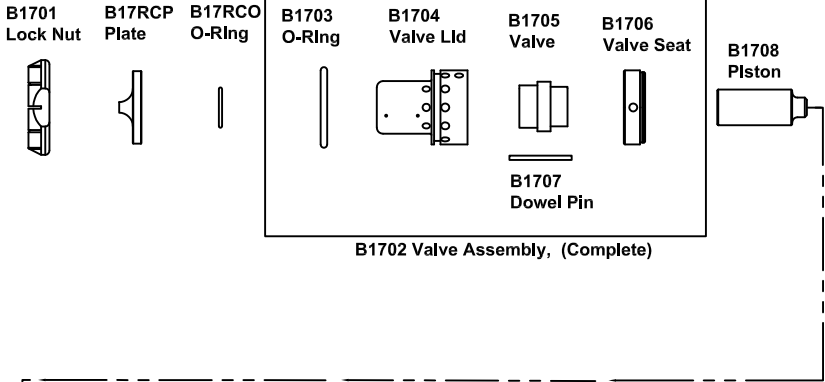


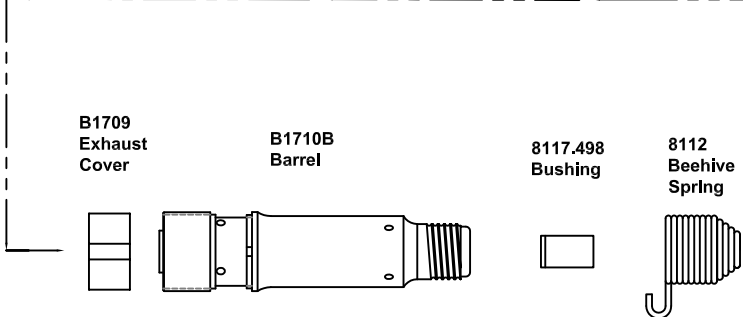
HTP B17C RIVETER / AIR HAMMER



B1700 Handle Assembly, (Complete)



B1702 Valve Assembly, (Complete)



*** LUBRICATE DAILY ***

1. Disconnect air supply from tool. Remove chisel from nose end of tool.
 2. Before installation or removal of any barrel, the socket head cap screws must be in both 5/16" holes in the handle housing. These screws are installed by the manufacturer and should permanently remain in place. If missing, **DO NOT PROCEED** as permanent damage may result to the urethane during the tightening or loosening. **FAILURE TO USE PROPER PARTS VOIDS WARRANTY.**
 3. Place handle into vise, ensuring that the flats on either side of the handle are in contact with the vise jaws. Loosen lock ring, and loosen barrel (use vise jaw protectors if possible).
 4. Inspect all parts for wear and/or damage. Replace as necessary. Clean and flush all parts, lightly oil, and reassemble as directed above.
- USE OF OTHER THAN HONSA REPLACEMENT PARTS MAY DECREASE PERFORMANCE, INCREASE MAINTENANCE AND MAY VOID WARRANTY.**

TO DISASSEMBLE TOOL

1. Disassemble valve assembly by lining up the indentations on the valve cases. Insert piston into barrel. Place valve assembly on barrel, ensuring that the indentations on the valve assembly align with the indentation on the barrel. Place receiver cup plate(B17 RCP) on top of the valve assembly with the pedestal side facing vertically.
2. Slide handle onto barrel and valve assembly until threads come into contact with each other. Screw barrel into the handle with the handle in the upright position. Hand tighten barrel into handle, oil, and run tool to insure proper operation.
3. Place handle into vise, ensuring that the flats on either side of the handle are in contact with the vise jaws. Tighten barrel firmly (use vise jaw protectors if possible). Using a 1/2" drive torque wrench, tighten barrel to 175 ft lbs.
4. Tighten lock ring to 160 ft lbs.
5. After 24 hours of operation, re-tighten barrel.

TO ASSEMBLE TOOL

1. Before installation or removal of any barrel, the socket head cap screws must be in both holes in the handle housing. These screws are installed by the manufacturer and should permanently remain in place. If missing, **DO NOT PROCEED** as permanent damage may result to the urethane during the tightening or loosening. **FAILURE TO USE PROPER PARTS VOIDS WARRANTY.**
2. Install lock ring onto threaded portion of barrel. Install exhaust cover onto barrel. Stand barrel on nose end.

MAINTENANCE PROCEDURES FOR HONSA TOOLS HTP-B17B RIVETERS

HONSA
 Made in the U.S.A.
 HONSA ERGONOMIC TECHNOLOGIES, INC.
 1300 11th Street West | Milan, IL 61264
 PHONE 309-756-0200 | FAX 309-756-0700 | TOLL FREE 800-800-9371
 www.honsatools.com